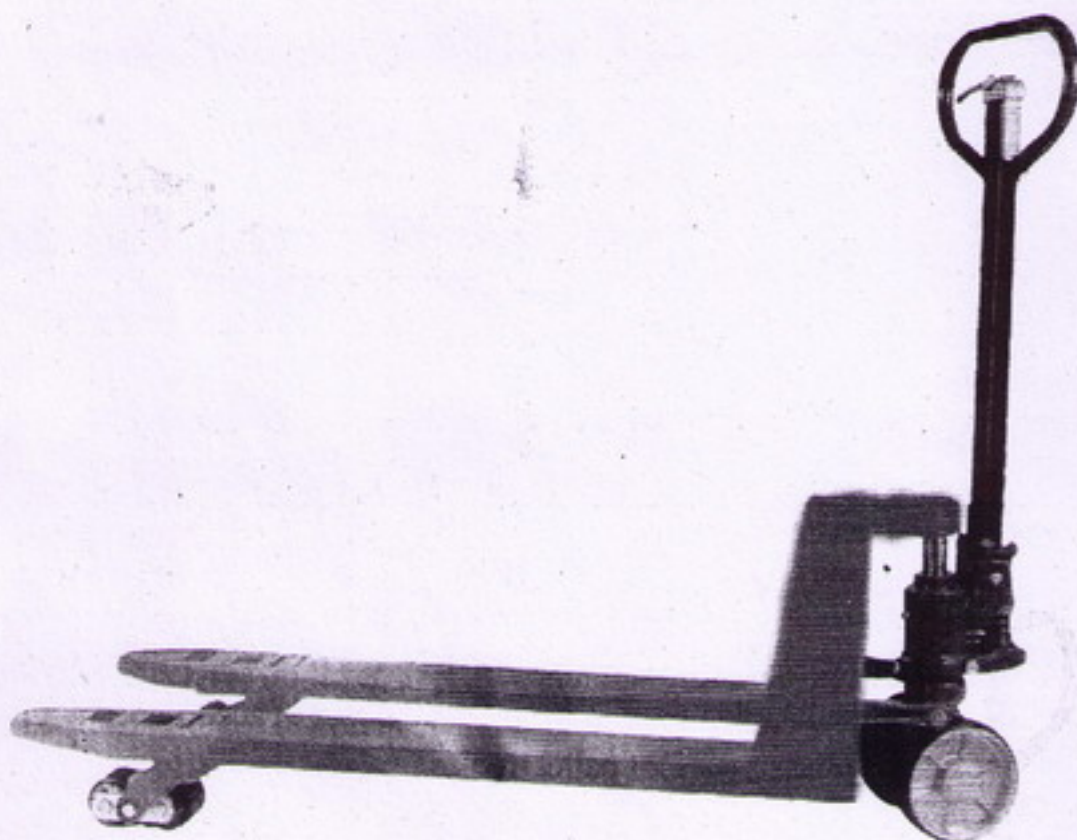


Operating Instructions
Parts List

SINOLIFT



NP SERIES Standard Hand pallet Truck

Note: Owner and Operator must read and understand this operating instructions before using this pallet truck.

ASIAMIX ENGINEERING GROUP CO., LTD.

TEL : 0-2710-5046 FAX : 0-2758-9206

www.asiamixgroup.com

Thank you for using this pallet truck. For your safety and correct operation, please carefully read this instruction before using it.

Note: All of the information reported herein is based on data available at the moment of printing. The factory reserves the right to modify its own products at any moment without notice and incurring in any sanction. So it is suggested to always verify possible updates.

1. GENERAL SPECIFICATIONS

Model	NP20	NP20	NP25	NP25	NP30	NP30
Capacity(kg)	2000	2000	2500	2500	3000	3000
Max.fork height (mm)	200(or 185)					
Min.fork height (mm)	80(or 70)					
Fork length	1150	1220	1150	1220	1150	1220
Overall fork width(mm)	520	685	520	685	520	685
Every fork width(mm)	150					
Load roller diameter(mm)	78x70(or 78x100) Nylon/Polyurethane material					
Steering wheel diameter(mm)	200(or 180)					
Net weight (kg)	74	77	76	79	83	86
Quantities/20ft container (pcs)	180	174	180	174	180	174

Notes: Special fork lengths are available like 810.915.1070.1500.2000mm.

Materials and specifications are subject to change without notice.

2. TO ATTACHED HANDLE TO PUMP UNIT

- 2.1 Take out the handle tube (2) with code that is in accordance with the one on the chassis (26) of pallet truck.
- 2.2 Remove four screws (5) and four lock washers (6) [or a shaft (5 + 6)] from the bracket (69).
- 2.3 Set handle tube (2) on the bracket (69), notice to let the control rod (20) to pass through the hole in the center of the bracket (69) and the shaft (67), Button the control rod (20), washer (21) and nut (22).
- 2.4 Fix the handle tube (2) on the bracket (69) with the screw (5) and the lock washer (6).
- 2.5 Raise the release lever (102) and put the pin on control rod (20) into the groove of release lever (102)

3. TO ADJUST RELEASE DEVICE

On the draw-bar of this pallet truck, you can find the control rod (20) which can be regulated in three positions.

LOWER = to lower the forks; NEUTRAL = to move the load;
ASCENT = to raise the fork. After assembling the handle, you can adjust three positions according to the following steps:

- 3.1 First tighten the shaft (103) on the release lever (102) until the LOWER position function work.
- 3.2 If the forks elevate while pumping in NEUTRAL position, turn the shaft (103) clockwise until pumping action does not raise the forks and the NEUTRAL position functions properly.
- 3.3 If the forks descend while pumping in the NEUTRAL position, turn the shaft (103) counter-clockwise until the forks do not lower.
- 3.4 If the forks do not descend while the control rod (20) is in the LOWER position, turn the shaft (103) clockwise until raising the control rod (20) lowers the forks. Then check the NEUTRAL position according to item 3.2 and 3.3.
- 3.5 If the forks do not elevate while pumping in the ASCENT position, turn the shaft (103) counter-clockwise until the forks elevate while pumping in the ASCENT position. Then check the NEUTRAL and LOWER position according to item 3.2, 3.3 and 3.4.

4. MAINTENANCE

4.1 OIL

Please check the oil level every six months. Total volume of oil is about 0.3 liter, Use different hydraulic oil according to temperature as mentioned below.

Temperature	oil
-5°C ~ +45°C	#68 hydraulic oil (equivalent to ISO VG68)
-15°C ~ -5°C	#46 hydraulic oil (equivalent to ISO VG46)

4.2 TO BANISH THE AIR

The air may come into the hydraulic oil because of transportation or pump in upset position. It can cause that forks do not elevate while pumping in the ASCENT position. The air can be banished in the following way: let the control rod (20) on the LOWER position, then move the handle tube (2) up and down for several times.

4.3 DAILY CHECK AND MAINTAINANCE

Daily check of the pallet truck can limit wear as much as possible, The forks should be unloaded and lowered in the lowest position when the job is over.

4.4 LUBRICATION

Use motor oil or grease to lubricate all movable parts.

5. GUIDE TO SAFETY OPERATION

For safe operation of pallet truck, please read all warning signs and instructions here and/or on the pallet truck before using this truck.

- 5.1 Don't operate a pallet truck unless you are familiar with it and have been trained and/or authorized to do so.
- 5.2 Don't operate a truck unless you have checked its condition. Give special attention to the wheels, the handle assembly, the forks, lift and lower control.
- 5.3 Don't use the truck on a slopping ground.
- 5.4 Never place any part of your body in the lifting mechanism or under the fork or load. Don't carry passengers.
- 5.5 The operator had better take on gloves and security shoes for labor protecting.
- 5.6 Don't handle unstable or loosely stacked loads.
- 5.7 Don't overload the truck.
- 5.8 Not subject to unbalanced load, either side to side or along the length of the chassis.
- 5.9 The capacity of the truck assumes an evenly distributed load with the center of the load being at the halfway point of the length of the forks.
- 5.10 Make sure that lengths of the forks match the lengths of the pallets.
- 5.11 Lower the forks to lowest height when the truck is not used.
- 5.12 At others special condition or place, the operator should be careful to operate the pallet truck.

6. TROUBLES SHOOTING

NO.	TROUBLE	CAUSE	SHOOTING
1	The forks can't rise to max. height.	- The hydraulic oil is not enough.	- Pour in enough filtered oil
2	The forks can't be lifted up.	- Without hydraulic oil - The oil has impurities. - Discharge valve is out of adjustment. - Air come into hydraulic oil.	- Pour in enough filtered oil - Change the oil - Adjust shaft (103) - Banish the air

3	The forks can't be descended.	<ul style="list-style-type: none"> - The piston rod (78) and lid (81) becomes deformed result from serious unbalanced load. - Component deformation result from unbalanced load - The forks were kept at high position for long time with piston rod (78) bared with and got rusty. - The shaft (103) is not in the correct position. 	<ul style="list-style-type: none"> - Replace the piston rod (103) or lid (81) - Repair or replace component to make it run smoothly - Remove the rust on the piston rod (78). keeping the forks at lowest position if not being used. - Adjust the shaft (103).
4	Leaks	<ul style="list-style-type: none"> - Seals worn out or damaged - Some parts cracked or worn out 	<ul style="list-style-type: none"> - Replace seals with new ones - Check and replace with ones
5	The forks descends without the discharge valve worked	<ul style="list-style-type: none"> - The impurities in the oil cause the discharge valve unable to be closed tightly. - Air come into the oil - Seals worn out or damaged - Discharge valve is out of adjustment. 	<ul style="list-style-type: none"> - Replace with filtered oil - Banish the oil - Replace with new ones - Adjust the shaft (103)

Note: Don't try to repair the pallet truck unless you are trained and authorized to do so.

Fig. 1

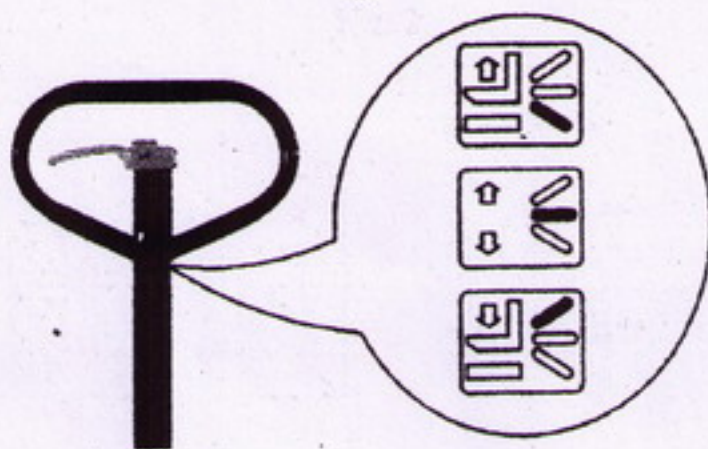
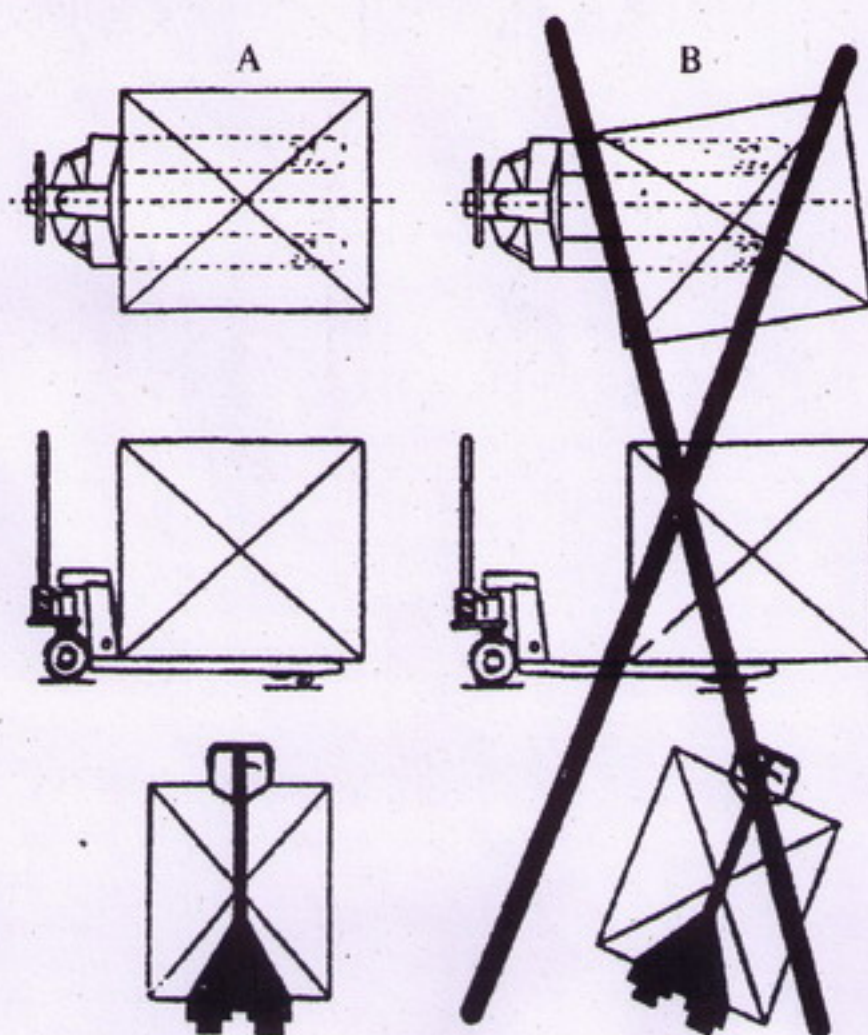
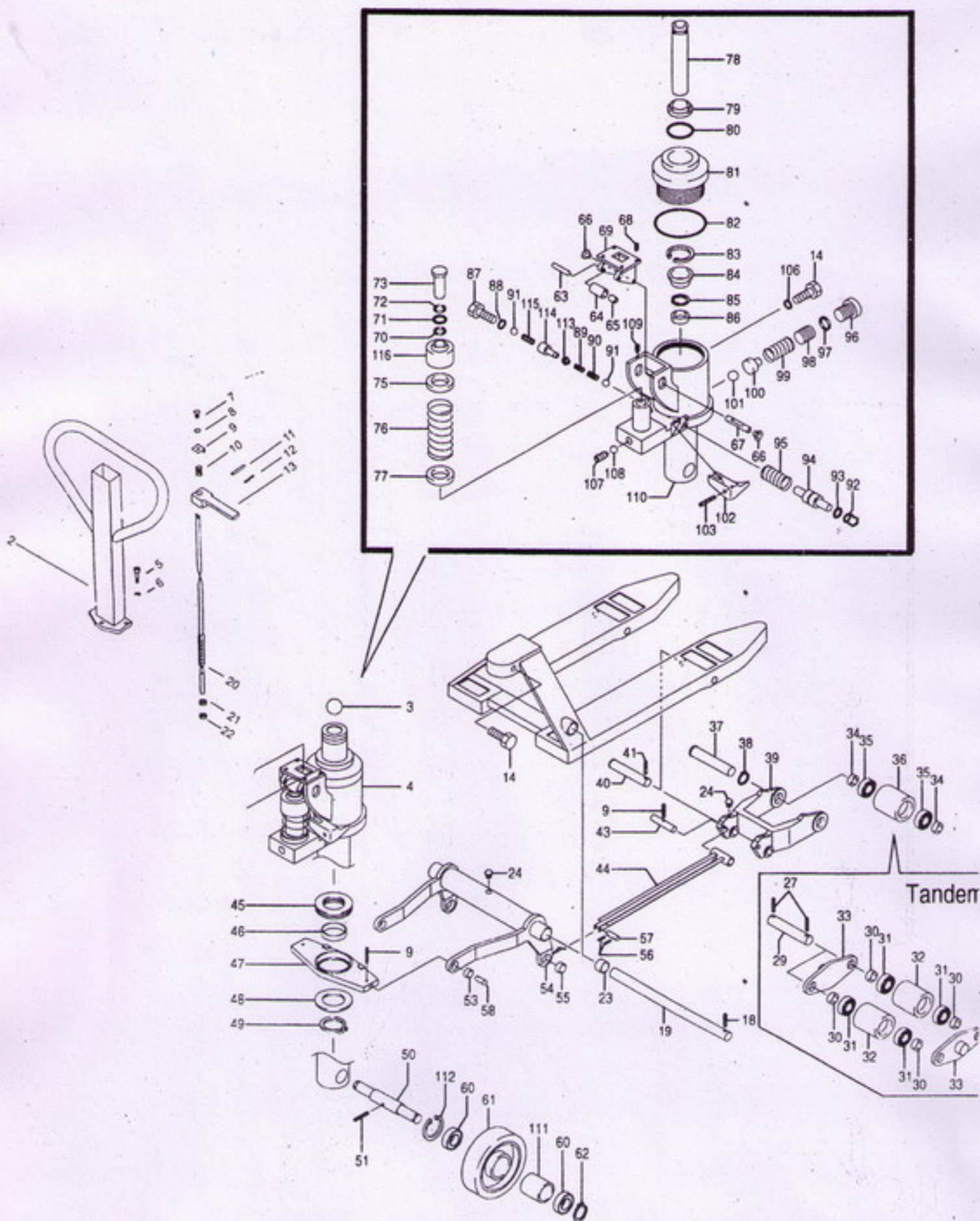


Fig. 2





ITEM#	DESCRIPTION	ITEM#	DESCRIPTION
1	PLATE	60	BEARING
2	HANDLE TUBE	61	STEER WHEEL
3	STEEL BALL	62	RING
4	PUMP	63	SHAFT
5	SCREW	64	ROLLER
6	LOCK WASHER	65	SLEEVE
7	SCREW	66	SLEEVE
8	LOCK WASHER	67	SHAFT
9	LEVER SWITCH	68	SCREW
10	SPRING	69	BRACKET
11	SPRING PIN	70	O'RING
12	SPRING PIN	71	B.U.WASHER
13	CONTROL LEVER	72	WIPER
14	SCREW	73	PUMP PLUNGER
15	NAME PLATE	75	WASHER
16	NAME PLATE	76	SPRING
17	NAME PLATE	77	WASHER
18	SPRING PIN	78	PISTON ROD
19	SHAFT	79	WIPER
20	CONTROL ROD	80	O'RING
21	WASHER	81	LID
22	NUT	82	O'RING
23	SLEEVE	83	SNAP RING
24	GREASE FITTING	84	SLEEVE
25	NAME PLATE	85	SNAP RING
26	CHASSIS	86	Y RING
34	SPACER	87	SCREW
35	BEARING	88	WASHER
36	LOAD ROLLER	89	SPRING
37	AXLE	90	SPINDLE
38	SPRING PIN	91	BALL
39	WHEEL BRACKET	92	SLEEVE
40	AXLE	93	O'RING
41	SPRING PIN	94	RELEASE PIN
42	SPRING PIN	95	SPRING
43	SHAFT	96	SCREW
44A	PUSH ROD 48"	97	WASHER
44B	PUSH ROD 42"	98	SCREW
44C	PUSH ROD 36"	99	SPRING
45	BEARING	100	SPRING BASE
46	RING	101	BALL
47	TRAVERSE	102	RELEASE LEVER
48	WASHER	103	SHAFT
49	SNAP RING	105	SCREW
50	STEER WHEEL AXLE	106	WASHER
51	SPRING PIN	107	SCREW
52	SCREW	108	BALL
53	SLEEVE	109	SCREW
54A	LIFTING LINK 27"	111	SPACER
54B	LIFTING LINK 20"	112	SNAP RING
55	BUSHING		SEAL KIT
56	SPRING PIN	113	STEEL BALL
57	SHAFT	114	SPRING
58	SHAFT	115	SHAFT
59	NUT		