

**INSTRUCION MANUAL**  
**HYDRAULIC TABLE TRUCK**



**Model : TF75SD / TF10SD**

**Model : CYT750S / CYT1000S**

# INSTRUCTION MANUAL

## TF75SD/TF100SD TWO SPEED HYDRAULIC TABLE TRUCK

### 1. Brief instruction

#### I. Use & applicable range

It is a convertible vehicle using for lifting and transporting in workshop, workshop, warehouse and wharf, etc.

### 2. Basic Data:

#### CYT750S

#### CYT1000S

Model	TF75SD	TF100SD
Load Capacity (kg)	750	1000
Table Size L×W (mm)	1200×610	1200×610
Maximum Height (mm)	1700	1700
Minmum Height (mm)	500	500
Total Length (mm)	1600	1600
Total Height (mm)	1000	1000
Net Weight (kg)	240	260
Packing Dimensions (mm)	1400×620×520	1400×620×520

### 3. Installation

- I. Draw out the pin in the foot pedal and put the foot pedal into the foot pedal holder, then use the pin to fix them.
- II. Put the handle on the frame seat and fix it by 4×M10 bolt.
- III. Turn out the discharge bolt, after put the foot pedal board to tighten the bolt.

### 4. Using

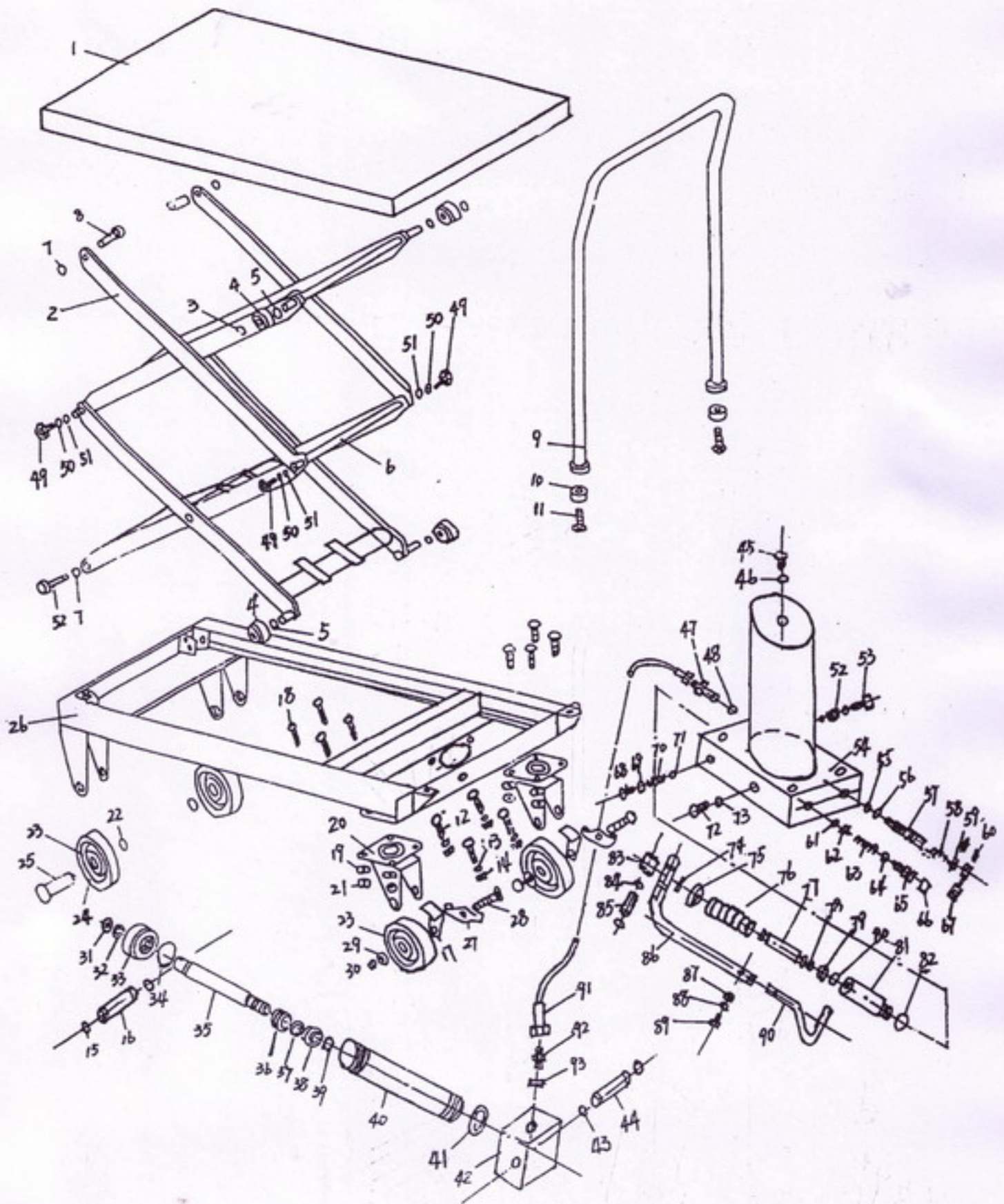
- I. Please test the unload cart before using. Step the foot pedal equably by foot to lift the platform to the max height.
- II. Please lock the brake on the wheel before loading.
- III. Please load and unload the goods in the rate capacity of the cart.
- IV. Please step the discharge switch to descend down the cart.

### 5. Warning!

- ① Read and understand the owner's manual before assembly and operation.
- ② Do not load scissor lift beyond its rated capacity.
- ③ Do not allow people to sit or ride on scissor lift.
- ④ Secure load before raising or moving scissor lift
- ⑤ Do not transport loads in the raised position.
- ⑥ Use only on smooth finished floors.
- ⑦ Pull release lever slowly to allow load to descend in a controlled manner.
- ⑧ Keep hands and feet clear of table when lowering load.
- ⑨ Failure to comply with the above warnings may result in personal injury and/or property damage.



# TF75S HYDRAULIC TABLE TRUCK PARTS





## TF75S HYDRAULIC TABLE TRUCK PARTS

No.	Desdription	Q'ty
1	Table	1
2	Link Assemble	1
3	C-Ring	4
4	Roller Guide	4
5	Washer	4
6	Long Shaft	2
7	C-Ring	4
8	Link Shaft	2
9	Handle	1
10	Washer	2
11	Hex Cap Bolt	2
12	Hex Cap Bolt	4
13	Washer	4
14	Nut	4
15	C-Ring	2
16	Lock Pin	1
17	Link Assembly	1
18	Hex Cap Bolt	8
19	Washer	8
20	Wheet Holder	2
21	Nut	8
22	C-Ring	2
23	Dust Cover	8
24	Wheel	4
25	Wheel Shaft	2
26	Frame	1
27	Stop Suppor	2
28	Hex Cap Bott	2

No.	Desdription	Q'ty
29	Washer	2
30	Nut	2
31	Dust Seal	1
32	O-Ring	1
33	Top Nut	1
34	O-Ring	1
35	Lift Piston	1
36	Piston Bushing	1
37	O-Ring	1
38	U-Packing	1
39	C-Ring	1
40	Cylinder	1
41	Washer	1
42	Valve	1
43	C-Ring	2
44	Link Shaft	1
45	Hex Plug	1
46	Washer	1
47	Duct Joint	1
48	O-Ring	1
49	Hex Cap Bolt	4
50	C-Ring	4
51	Washer	4
52	O-Ring	1
53	Plug	1
54	Valve	1
55	Steel Ball	1
56	O-Ring	1

## TF75S HYDRAULIC TABLE TRUCK PARTS

No.	Desdription	Q'ty	No.	Desdription	Q'ty
57	Lowering Valve	1	85	Link Shaft	1
58	Spring	1	86	Lever	1
59	Spring Cover	1	87	Flat Washer	1
60	Socket Set Screw	1	88	Washer	1
61	Steel Ball	1	89	Hex Cap Bolt	1
62	Seat Spring	1	90	Foot Lever	1
63	Relief Spring	1	91	High-pressure Duct	1
64	O-Ring	1	92	Duct Jiont	1
65	Relief Adjusting Screw	1	93	O-Ring	1
66	Relief Adjusting Cover	1			
67	Foot Lever	1			
68	Hex Plug	1			
69	O-Ring	1			
70	Spring	1			
71	Steel Ball	1			
72	Plug	1			
73	O-Ring	1			
74	Lock Pin	1			
75	Seat Spring	1			
76	Spring	1			
77	Lift Piston	1			
78	U-Packing	1			
79	Dust Seal	1			
80	O-Ring	1			
81	Pump Cylinder	1			
82	O-Ring	1			
83	Wheel	1			
84	C-Ring	2			